

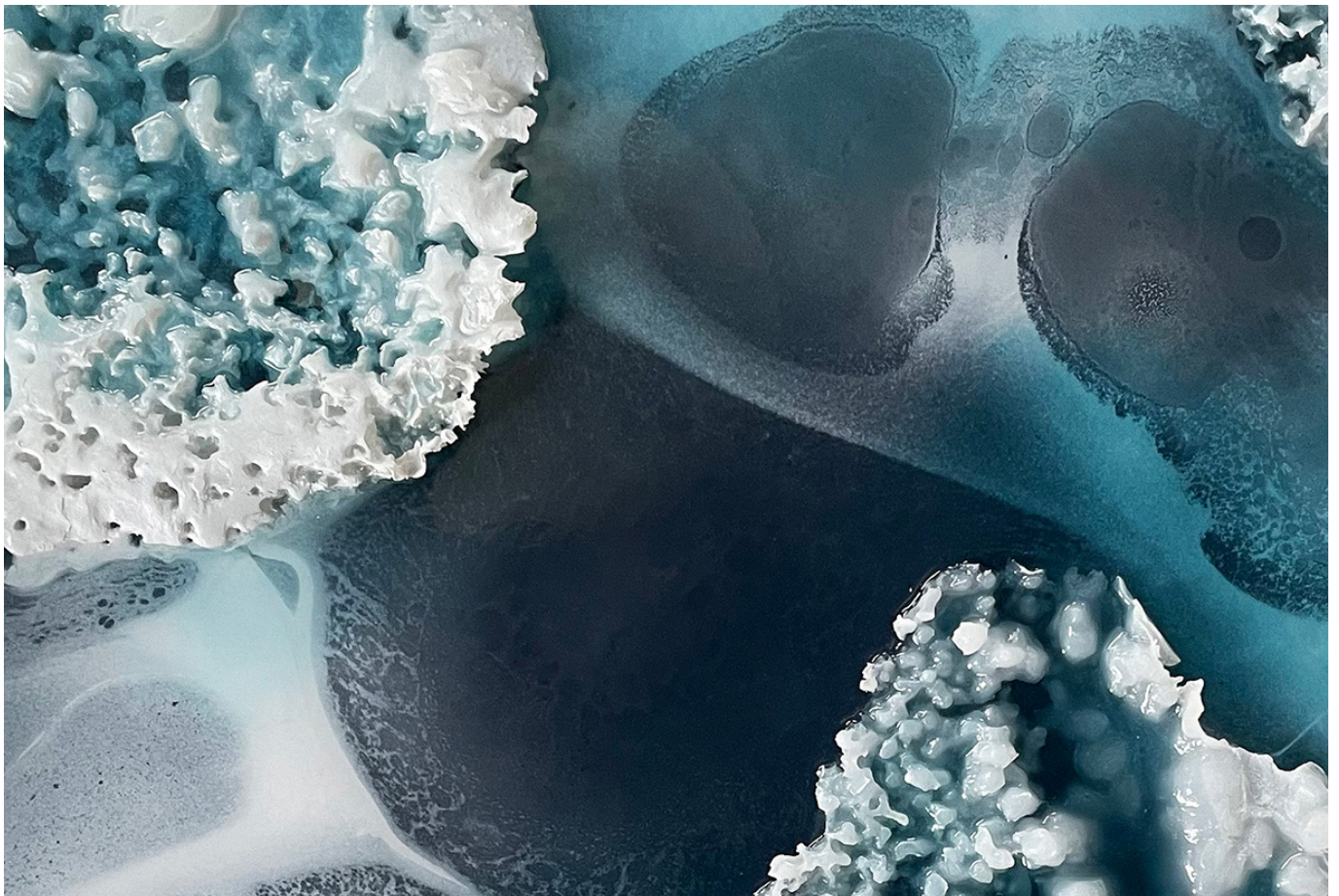
The background is a deep blue with a visible, organic texture, possibly resembling watercolor or a fine-grained material. A dark, semi-transparent horizontal band spans the middle of the image, providing a high-contrast area for the text.

ALVA GALLAGHER: STUDIO VISIT



Alva Gallagher
Icescapes

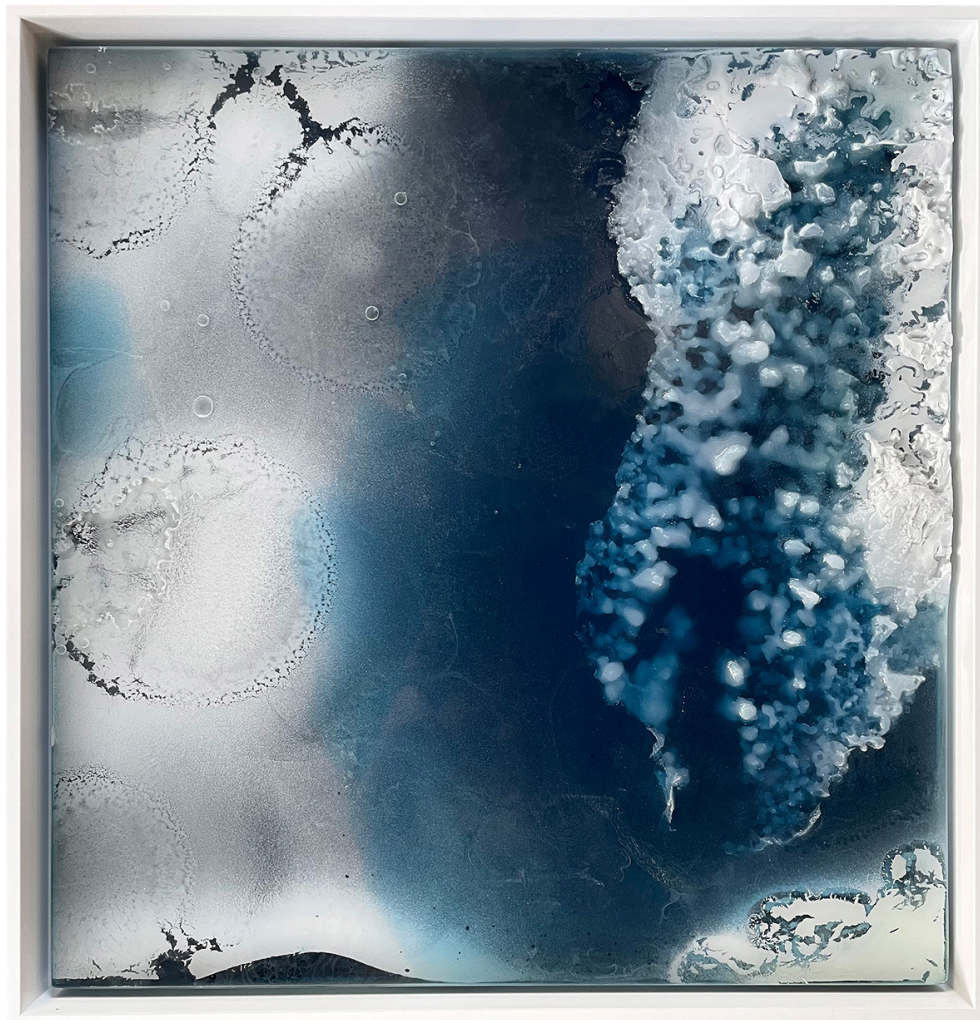
Alva Gallagher's *Icescapes* wall sculptures begin with actual slabs of ice sourced from freezing rivers and lakes in the intense landscapes of Alberta. Currently based in Canmore within the Canadian Rockies, Gallagher creates a range of sculpture inspired by the nebulous half-states of water, as an exploration of fragile yet severe ecosystems and their mysterious allure. Through a variation on lost wax casting that utilizes manipulated ice sheets for molds, Gallagher forges layers of casts to create 'ice pool portals' that invite the viewer into ambiguous, enticing depths.





Taking these large ice blocks, Gallagher uses applied heat to experiment with texture and shape, which requires freezing and refreezing the form until it reaches its desired state.

“I take molds from (the ice blocks) and compile them into casts within a master mold and then cast them all together.”
— Alva Gallagher



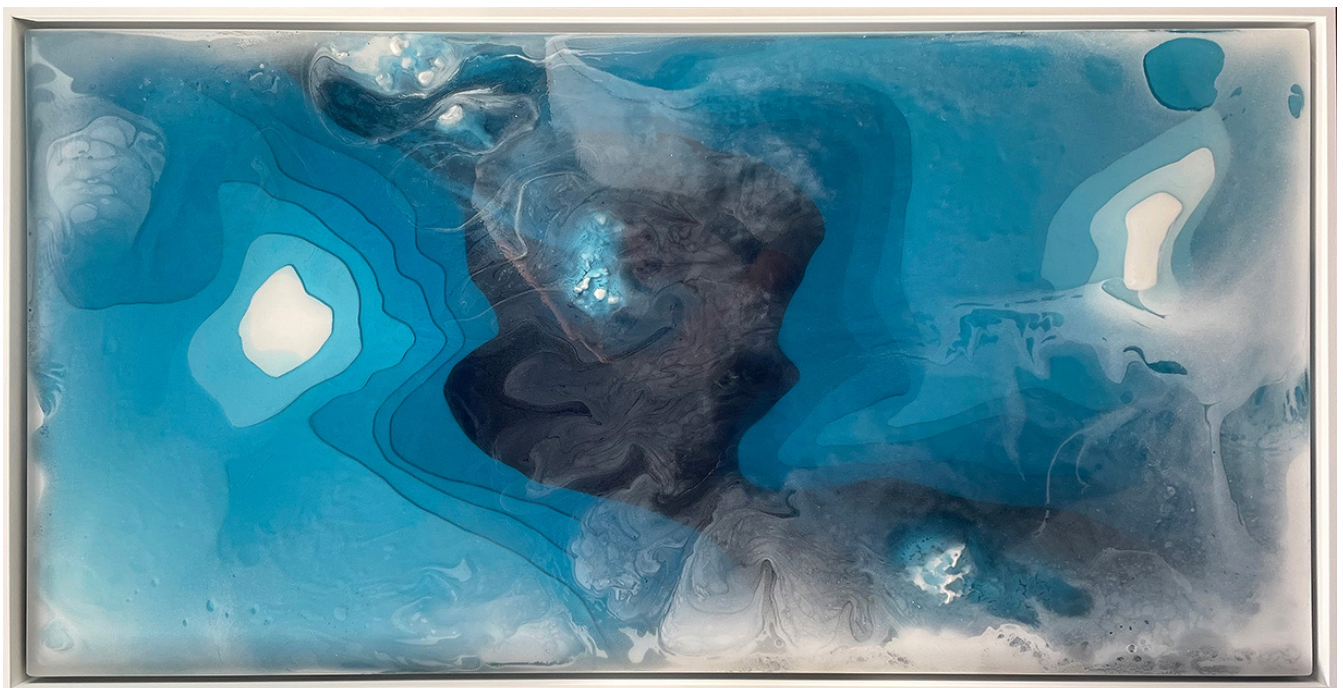
The casts, while predominantly made of resin, combine paints, oils, plaster, and assorted solutions to varying degrees, resulting in vastly differing textures and cool, blue tones. Finished pieces appear as snapshots of frozen layers with wide-ranging viscosity, mimicking the nuanced states of ice melting in the springtime.



“I endeavor to research and immortalize segments of unique ice field formations. Flash freezing that perpetual movement to expose a moment hidden within the expanse; allowing the viewer to glimpse for an instant the lure of these depths; creating internal dialogues as metaphors for the fragility of the human condition.” — Alva Gallagher



Works such as “Tempest” (pictured above) are entirely made from ice casts slowly layered on top of each other, while “Undercurrents” (below) utilizes an even more complicated combination of carved wood and plaster layering that results in a rhythmic flow reminiscent of topographic mapping.





Gallagher's exploration of ice and water movements additionally speaks to concerns of climate change and melting glaciers, questioning the divide between natural, cyclical alterations to harsh landscapes and irreversible, unnatural developments. Central to her work is a sincere love for water and its necessity to sustain life; Gallagher wrangles and alchemizes the most important element of our natural landscape into mesmerizing vessels of mysterious depths.

